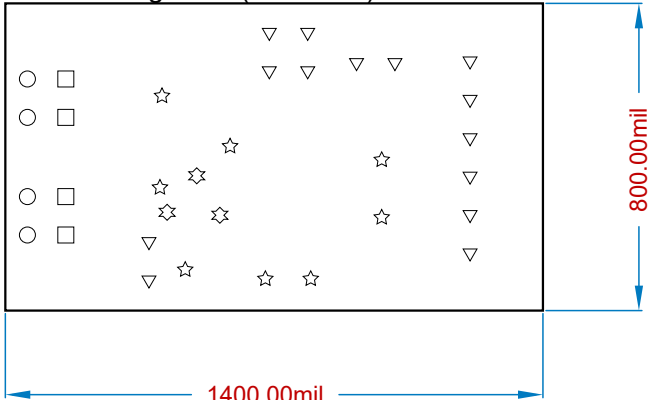


Drill Drawing View (Scale 2:1)



Drill Table

Symbol	Count	Hole Size	Plated
▽	14	41.34	Plated
○	4	43.31	Non-Plated
□	4	43.31	Plated
☆	3	9.06	Plated
☆	8	10.00	Plated


All other hole tolerances are +/-0.003

Fabrication Notes

- IPC Performance Class 2.
Fabricate in accordance with current IPC-6012.
Inspection must meet or exceed requirements of current IPC-A-600.
- All materials must be RoHS compliant. (RoHS 3, EU Directive 2015/863)
- FR-4 (170 Tg) laminate materials not otherwise specified must meet specifications for one or more of:
IPC-4101 /99 /102 /124 /126 /128 /129 /130 /131
- Layer buildup, materials, surface finishes, and coating colors are shown in layer stack table.
Copper weights listed are finished (after all plating steps).
Thicknesses shown in stackup table for legend (silkscreen), solder mask, and surface finish layers are suggested FOR REFERENCE ONLY; all requirements specified in IPC-6012 shall prevail.
- Note finished copper thickness of 1.4 mils (1 oz.).
- Finished board thickness: 61.89 mils+/- 10%.
- Detailed stackup construction is proposed FOR QUOTATION PURPOSES only.
Vendor to provide preferred stackup requirements for incorporation into final production drawing.
- Vendor may trim legend marking near solderable areas as necessary.
Vendor may remove solder mask slivers or open solder mask apertures as necessary.
- Vendor to break all sharp edges and sand any burrs flush with edges.
- Drill according to provided drill file.
Finished hole sizes not otherwise toleranced may follow IPC-2222.
Any hole of type "via" not otherwise toleranced may have negative tolerance equal to diameter.
- IPC-9252 electrical test is required.
Test MUST use supplied IPC-D-356 netlist as master source data.
- FINISH:
All exposed conductive pattern areas not covered with solder mask or other plating shall be ENIG or HASL
- Silk screen, top layer and bottom layer, White.
- Solder mask LPI, top layer and bottom layer, Blue.

THE INFORMATION CONTAINED IN THIS DRAWING IS THE SOLE PROPERTY OF RENESAS. ANY REPRODUCTION IN PART OR AS A WHOLE WITHOUT THE WRITTEN PERMISSION OF RENESAS IS PROHIBITED.

PROPRIETARY AND CONFIDENTIAL

UNLESS OTHERWISE SPECIFIED:		NAME	DATE			
DIMENSIONS ARE METRIC TOLERANCES: FRACTIONAL± ANGULAR: MACH± BEND ± TWO PLACE DECIMAL ± THREE PLACE DECIMAL ± INTERPRET GEOMETRIC TOLERANCING PER:	DRAWN	HVR	10/22/2024	710 Slater Rd Morrisville		
	CHECKED	KK	6/12/2023	Suite 200 NC 27560		
	ENG APPR.			TITLE ISL3173POCZ PMOD		
	MFG APPR.					
	Q.A.					
MATERIAL	COMMENTS:			SIZE	DWG. NO.	REVISION
FINISH				B	QC10T-ISL3173POCZ	A
DO NOT SCALE DRAWING				SCALE: 1:1		SHEET 1 OF 3

DO NOT SCALE DRAWING

Layer Stack Legend

Material	Layer	Thickness	Dielectric Material	Type	Gerber
	Top Overlay			Legend	GTO
Surface Material	Top Solder	1.00mil	SM-003	Solder Mask	GTS
Nickel, Gold	Top Surface Finish	0.16mil		Surface Finish	
CF-004	Top Layer	1.38mil		Signal	GTL
Prepreg		3.10mil	PP-008	Dielectric	
Prepreg		3.80mil	PP-013	Dielectric	
CF-004	Layer 1	1.38mil		Internal Plane	GP1
Core		39.00mil	Core-042	Dielectric	
CF-004	Layer 2	1.38mil		Internal Plane	GP2
Prepreg		3.80mil	PP-013	Dielectric	
Prepreg		3.10mil	PP-008	Dielectric	
CF-004	Bottom Layer	1.38mil		Signal	GBL
Nickel, Gold	Bottom Surface Finish	0.16mil		Surface Finish	
Surface Material	Bottom Solder	1.00mil	SM-003	Solder Mask	GBS
	Bottom Overlay			Legend	GBO
Total thickness: 60.63mil					

UNLESS OTHERWISE SPECIFIED:


DIMENSIONS ARE METRIC
TOLERANCES:
FRACTIONAL±
ANGULAR: MACH± BEND ±
TWO PLACE DECIMAL ±
THREE PLACE DECIMAL ±
INTERPRET GEOMETRIC
TOLERANCING PER:
MATERIAL
FINISH

THE INFORMATION CONTAINED IN
THIS DRAWING IS THE SOLE
PROPERTY OF RENESAS. ANY
REPRODUCTION IN PART OR AS A
WHOLE WITHOUT THE WRITTEN
PERMISSION OF RENESAS IS
PROHIBITED.

PROPRIETARY AND CONFIDENTIAL

	NAME	DATE
DRAWN	HVR	10/22/2024
CHECKED	KK	6/12/2023
ENG APPR.		
MFG APPR.		
Q.A.		
COMMENTS:		

DO NOT SCALE DRAWING



710 Slater Rd
Suite 200
Morrisville
NC 27560

TITLE
ISL3173POCZ PMOD

SIZE B	DWG. NO. QCIOT-ISL3173POCZ	REVISION A
-----------	-------------------------------	---------------

SCALE: 1:1	SHEET 2 OF 3
------------	--------------

A

B

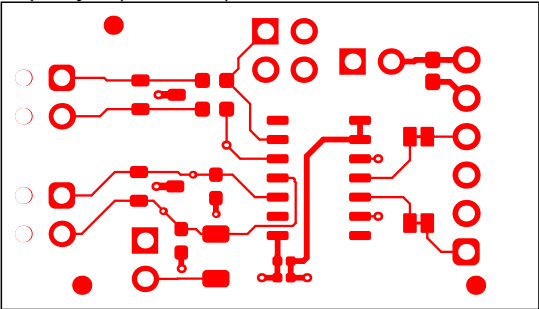
C

D

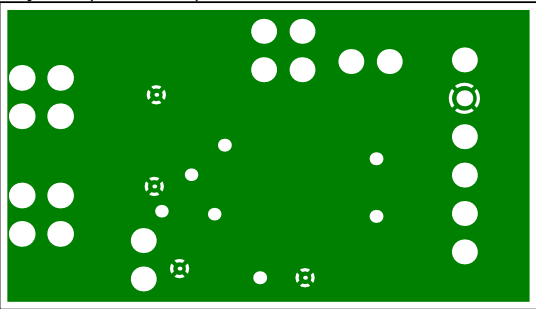
1

1

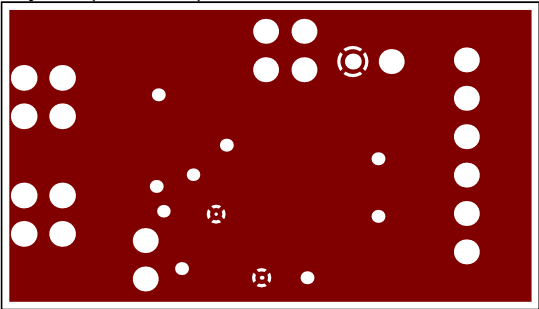
Top Layer (Scale 2:1)



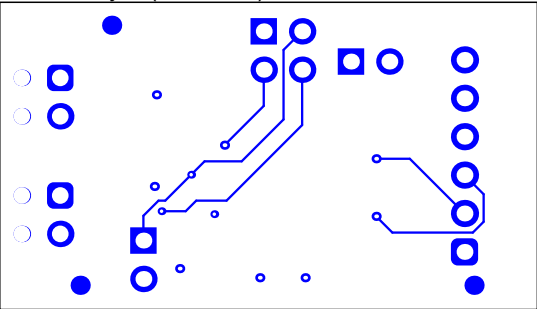
Layer 1 (Scale 2:1)



Layer 2 (Scale 2:1)



Bottom Layer (Scale 2:1)




2

2

THE INFORMATION CONTAINED IN THIS DRAWING IS THE SOLE PROPERTY OF RENESAS. ANY REPRODUCTION IN PART OR AS A WHOLE WITHOUT THE WRITTEN PERMISSION OF RENESAS IS PROHIBITED.

PROPRIETARY AND CONFIDENTIAL

UNLESS OTHERWISE SPECIFIED:		NAME	DATE		
DIMENSIONS ARE METRIC TOLERANCES: FRACTIONAL± ANGULAR: MACH± BEND ± TWO PLACE DECIMAL ± THREE PLACE DECIMAL ±	DRAWN	HVR	10/22/2024	710 Slater Rd Morrisville Suite 200 NC 27560	
	CHECKED	KK	6/12/2023		
	ENG APPR.			TITLE ISL3173POCZ PMOD	
	MFG APPR.				
	Q.A.				
INTERPRET GEOMETRIC TOLERANCING PER:	COMMENTS:			SIZE DWG. NO. REVISION B QCIOT-ISL3173POCZ A	
MATERIAL					
FINISH					
DO NOT SCALE DRAWING				SCALE: 1:1 SHEET 3 OF 3	

DO NOT SCALE DRAWING

A

B

C

D